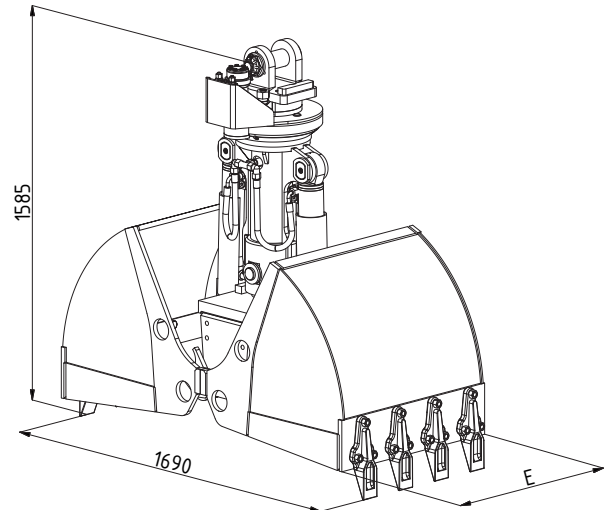
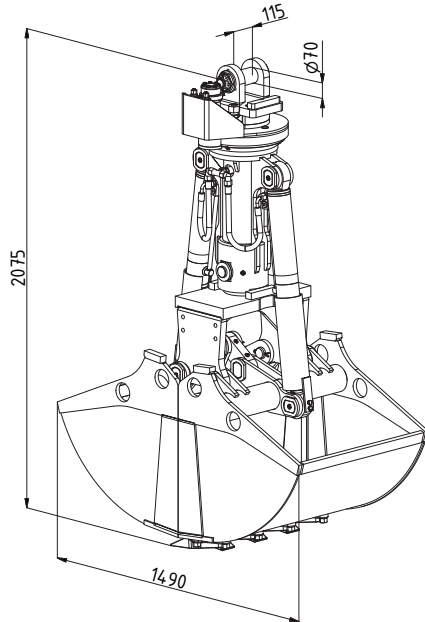
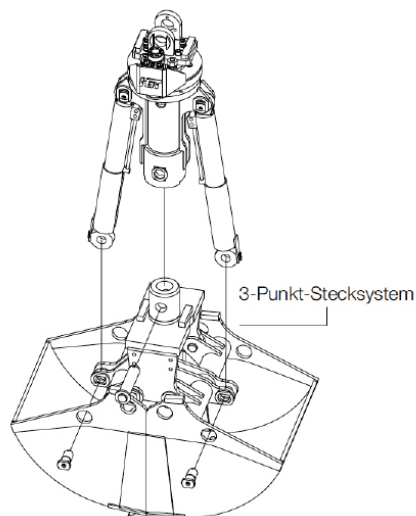


Series|DCS4

Excavator weight class: 13 - 21 t
Two-shell excavation grab



Type	Capacity SAE (l)	Weight (kg)	Cutting width E (mm)	Number of teeth
DCS4-300	180	675	300	3 (2-hole)
DCS4-400	240	720	400	3 (3-hole)
DCS4-500	300	750	500	3 (3-hole)
DCS4-600	360	780	600	5 (3-hole)
DCS4-700	420	855	700	5 (3-hole)
DCS4-800	480	885	800	7 (3-hole)
DCS4-900	540	915	900	7 (3-hole)
DCS4-1000	600	945	1000	9 (3-hole)



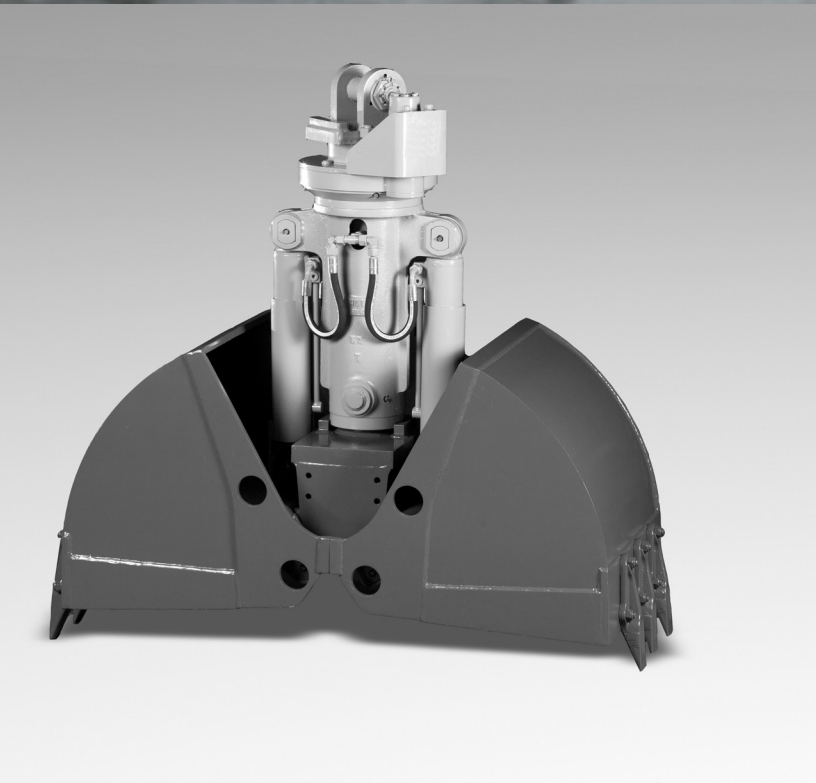
Technical specifications|DCS4

Excavator weight class:	t	13 - 21
Max. grab load bearing capacity	t	Grab: 4 / slewing gear: 10
Bulk weight up to	t/m ³	3
Max. operating pressure	bar	350 (grab function) / 140 (turning function)
Max. closing force	kN	67



|Use: Mobile and chain excavators

Multipurpose excavation grab for typical hydraulic excavator tasks such as excavation and digging natural soil, digging ditches and cable trenches, loading dirt, gravel and sand, lifting objects of all kinds.



|Design features

- The shells and shell carriers are exchangeable with a 3-point plug-in system within the entire series
- Continuously rotatable hydraulic rotary drive
- Side and base edges made of high-strength fine-grain steel (HB 450)
- Forged 3-hole screw-on teeth, piston rod protection, hose protective plate for the hydraulic connections on the slewing gear

|Available accessories and equipment

- Hose set and mounting for all known excavator manufacturers
- Mounting with pendular brake
- Load hooks, bucket teeth
- Compact motor
- Ejector, grab extension
- Special shells (such as round hole shells, HD design)
- Special shells according to customer specifications
- Additional special equipment upon request